



Natural
Resources
Commission

EFFECTIVE MONITORING, EVALUATION AND REPORTING

SUPPORTING ADAPTIVE MANAGEMENT

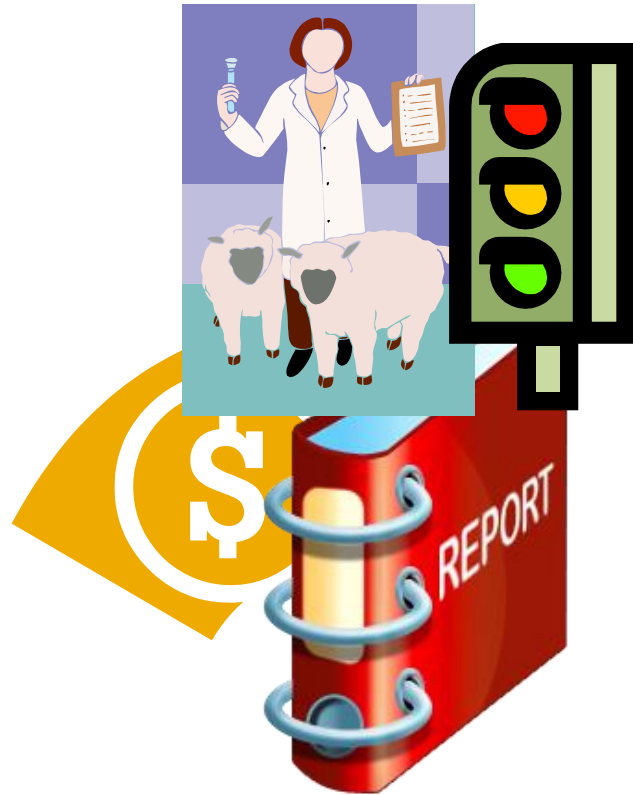
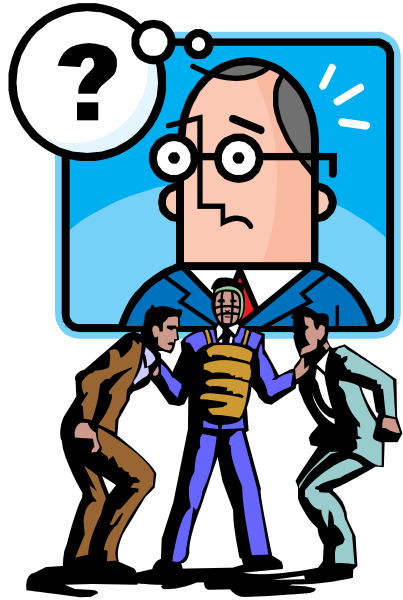
Adaptive forest management and resilient landscapes
- Institute of Foresters of Australia -

21 October 2014 - Royal Botanical Gardens, Sydney

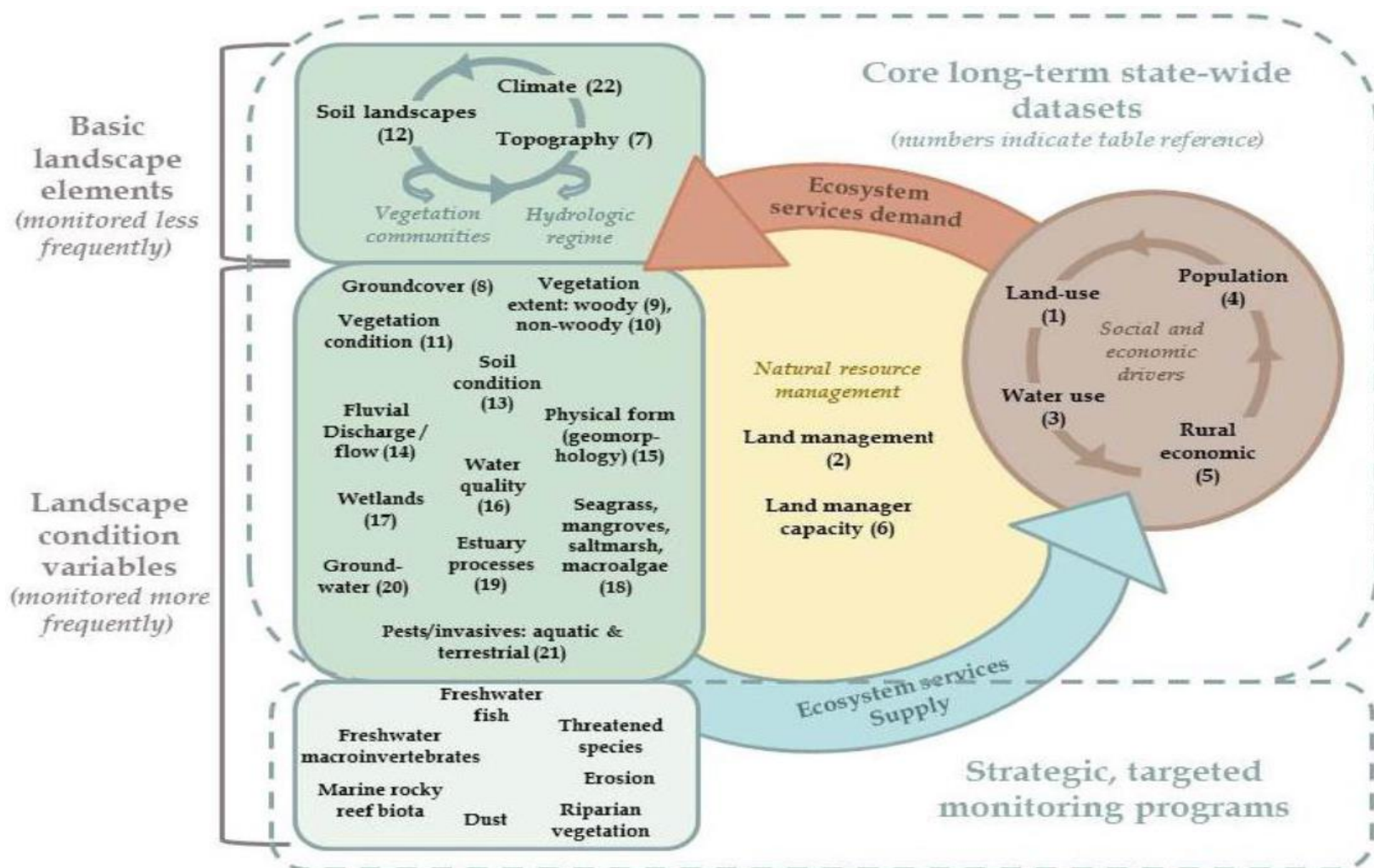
Todd Maher



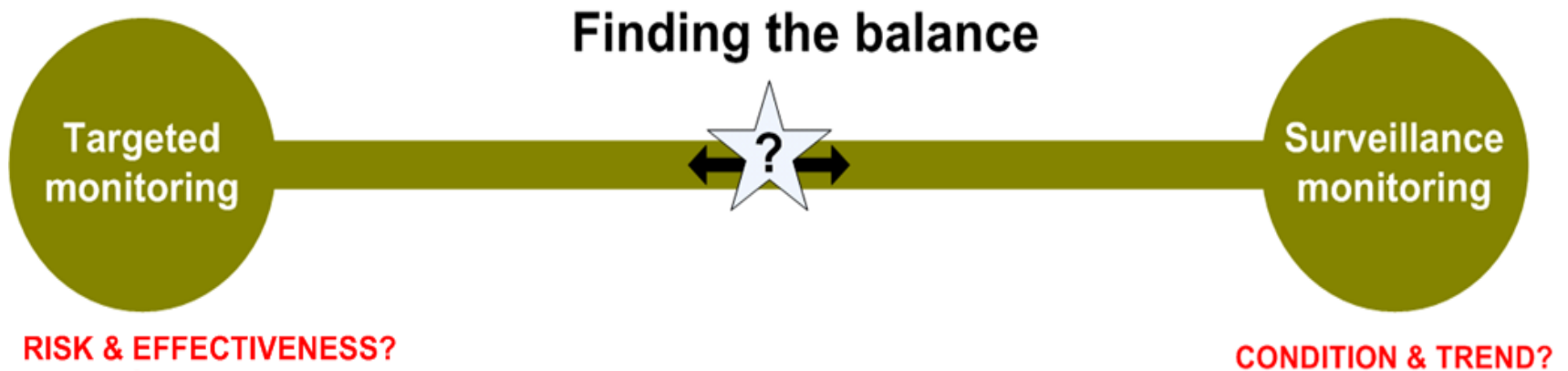
MER - serving itself?



Focusing on critical knowledge needs



Barriers and challenges



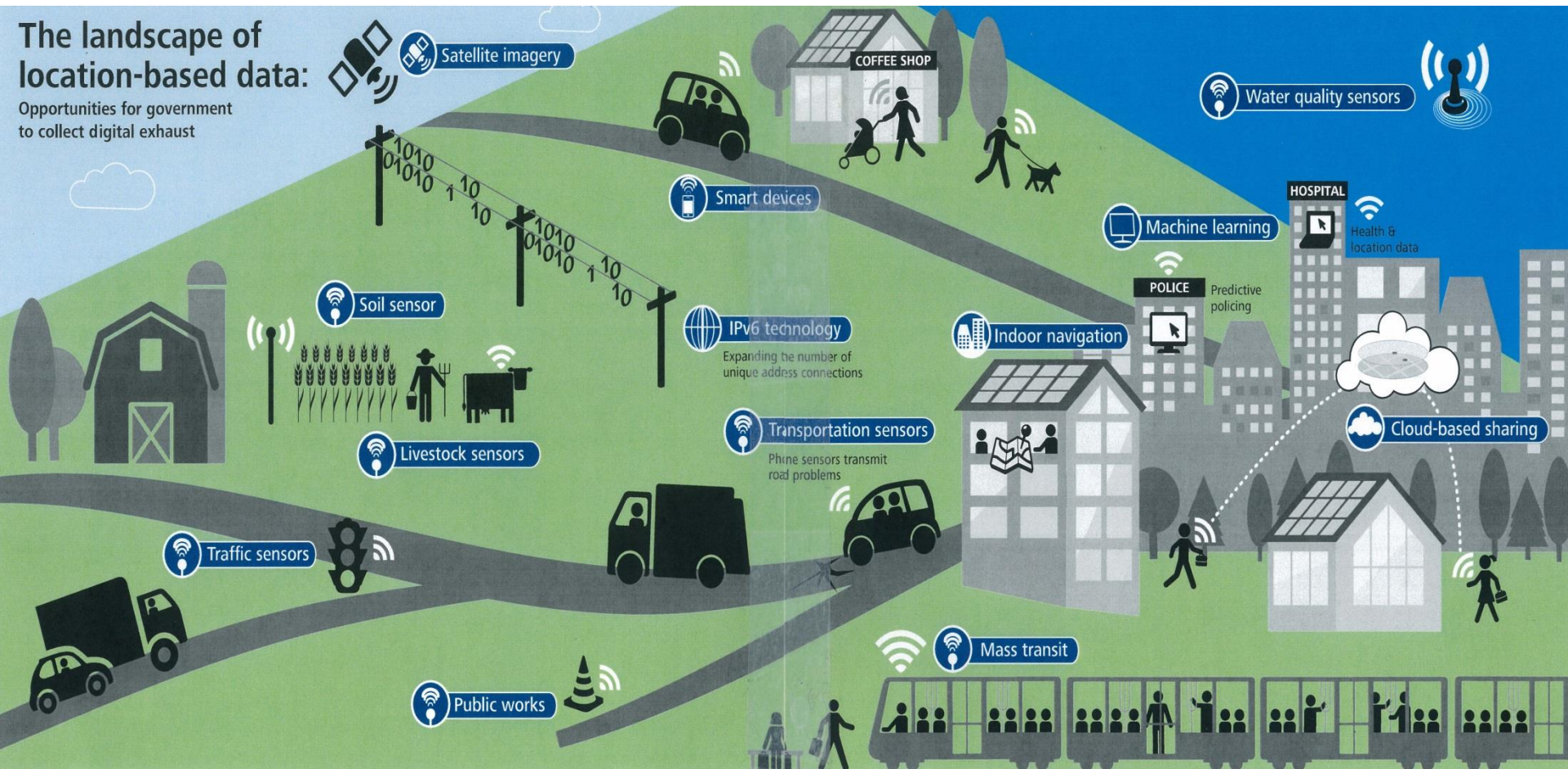
Adapted after Wintle et. al.(2010)

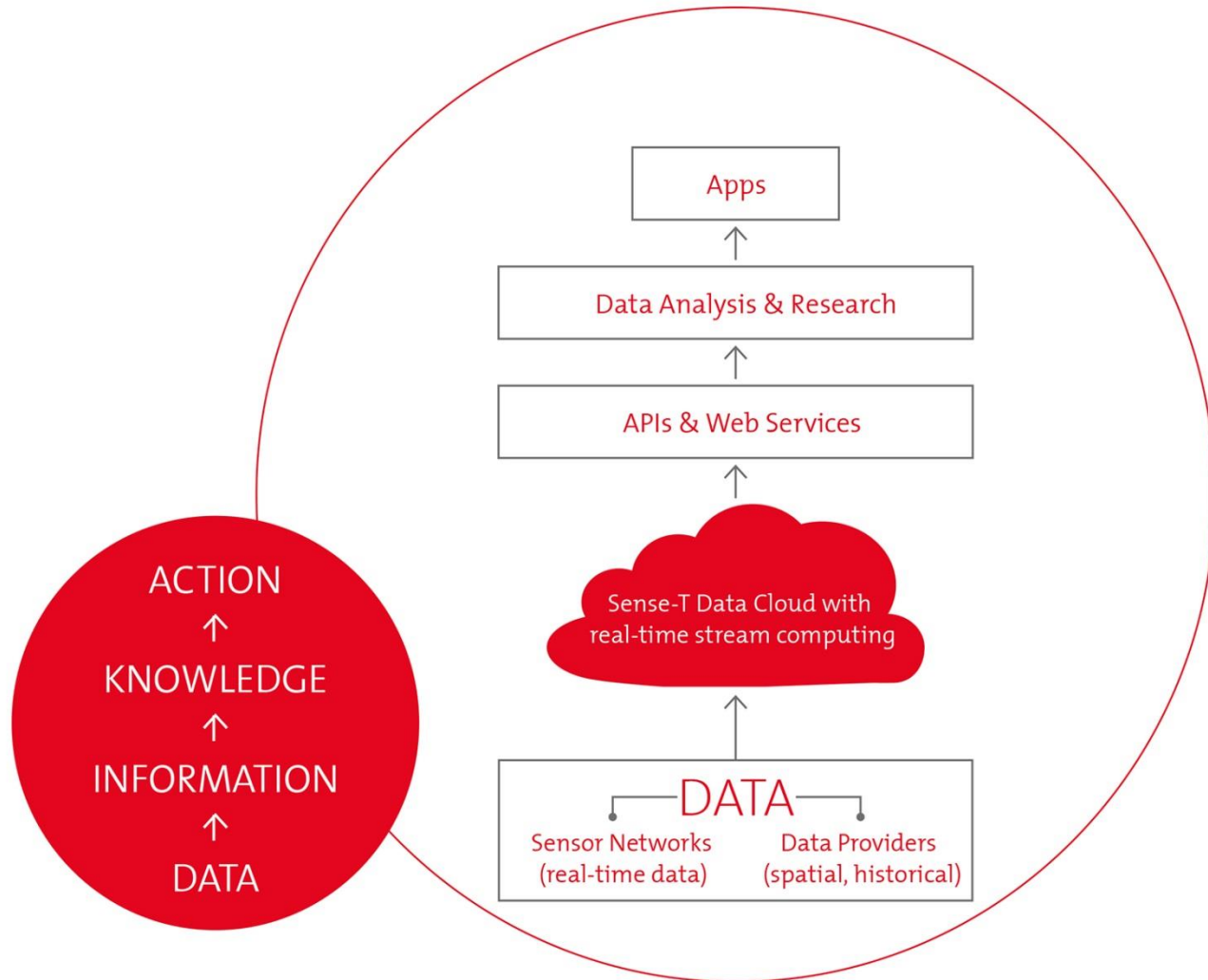


Capturing and delivering critical knowledge needs

The landscape of location-based data:

Opportunities for government to collect digital exhaust





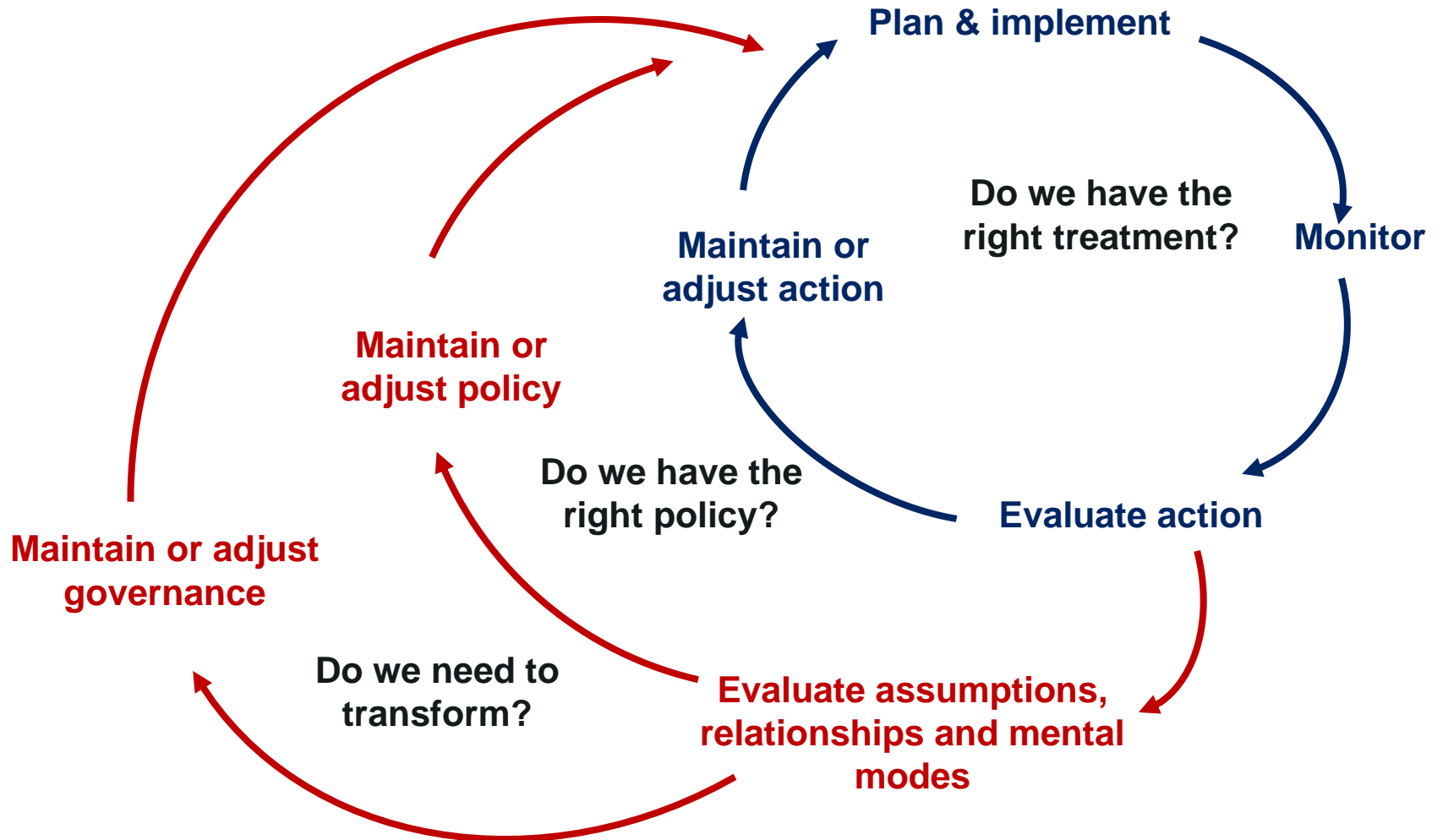
Barriers and challenges

“Government datasets that incorporate location-based information cannot be easily accessed and analysed with reliability across NSW Government agencies.

There remains too much duplication of effort collecting similar data, too little reuse and too few linkages across key datasets which is costly and inefficient.”



Learn by doing, and doing to learn



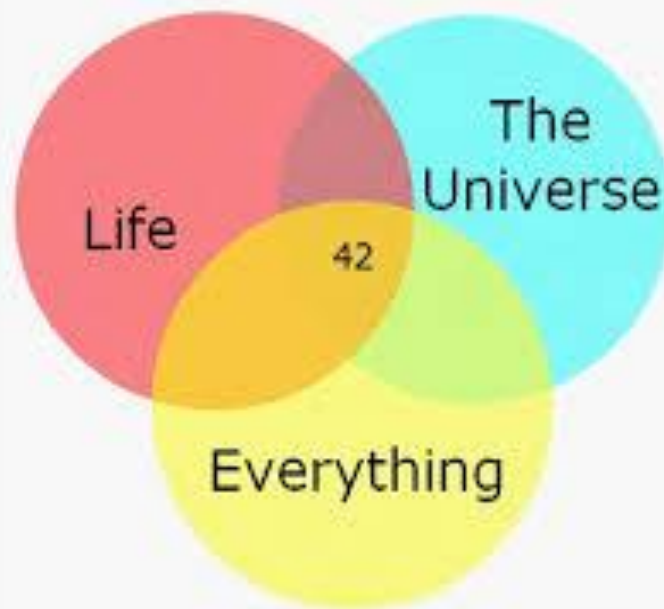
Barriers and challenges

- “...[current US regulatory paradigm] **has been to channel self-preserving agencies into cramming all that could possibly be thought or dreamed about actions they carry out, fund or authorise into a single-shot, all encompassing decision extravaganzas**”



Q What am I supposed to do with all of this information?

The Answer To:



Thank you

- Blann, K. and Light, S.S. (2000) *The path of last resort adaptive environmental assessment and management*. Developed in collaboration with the Collaborative Adaptive Management Network, available at www.adaptivemanagement.net/sites/default/files/Primer_0.doc
- Craig, R.K. and Ruhl, J.B. (2014) *Designing Administrative Law for Adaptive Management*. *V. L. Rev.* 67(1) 1-86
- Deloitte (2014) *The power of zoom: Transforming government through location intelligence*. Deloitte Development LLC.
- Doremus, H. (2010) Adaptive management as an information problem. *N.C. L. Rev.* 89 1455-1498
- Folke, C., Chapin III, F.S. and Olsson, P. (2009), Transformation in Ecosystem Stewardship, in Chapin III, F.S., Kofinas, G.P. and Folke, C. (eds), *Principles of Ecosystem Stewardship – Resilience-Based Natural Resource Management in a Changing World*,. Springer Science and Business Media, NY, USA, pp. 103-25.
- Heydon. G (2103) Sensing Tasmania in the Digital Economy. Presentation available at http://horticulture.com.au/librarymanager/libs/19/2013RDshowcase_Geof%20Heydon%20approved%20for%20web.pdf
- NRC (2012) *Review of NSW resource condition monitoring, evaluation and reporting*. Natural Resources Commission, Sydney
- NSW Office of Finances and Services (2014) *NSW Location Intelligence Strategy*. NSW Government, Sydney.
- Ruhl, J.B. (2004) Taking Adaptive Management Seriously: A case study of the Endangered Species Act. *K. L. Rev.* 52 1249-1284
- Sense-T – from sensing to intelligence .Brochure at <http://www.sense-t.org.au/latest-news/newsletters-and-reports>
- Shapiro, S.A, and Glicksman, R.L. (2003) *Risk Regulation at Risk: Restoring a Pragmatic Approach*. Stanford University Press, Stanford, California.
- Wintle, B.A., Runge, M.C. and Bekessy, S.A. (2010) Allocating monitoring effort in the face of unknown unknowns, *Ecology Letters*, doi: 10.1111/j.1461-0248.2010.01514.x